

CERTIFICATE OF LOCATION OF GOVERNMENT CORNER

EAST QUARTER Corner of Section 16, Township 105, Range 43, 5TH P.M.

STATE OF MINNESOTA, County of MURRAY

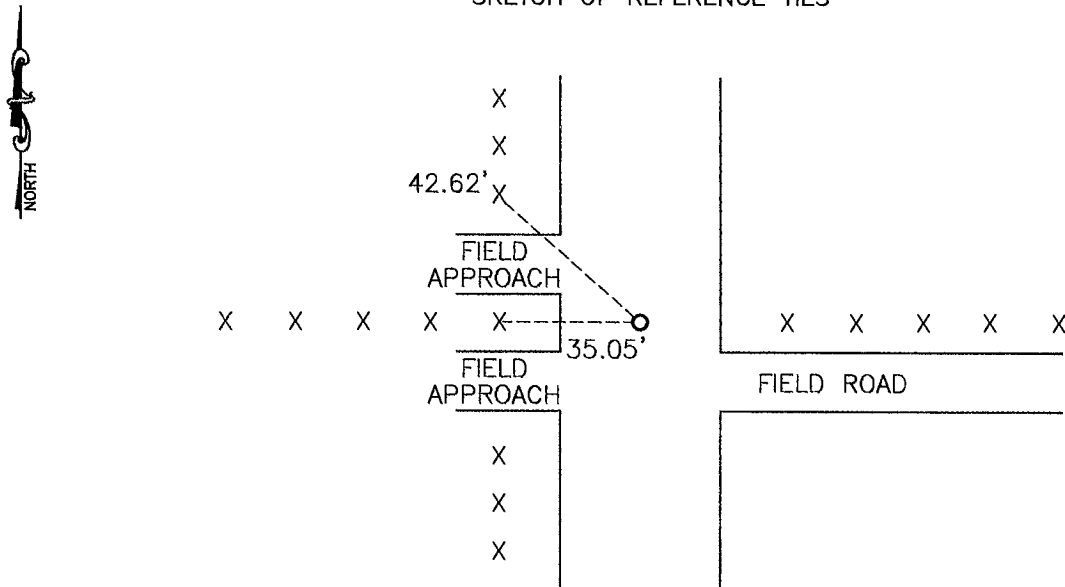
At the corner location shown on the sketch:

On _____ found a _____
DATE

left monument as found, lowered monument, removed monument (explain)

On 10-21-2008 placed a 1" PIPE WITH SEAL #43844
DATE

SKETCH OF REFERENCE TIES



Minnesota State Plane Coordinate System Murray County Datum NAD83 (1996)

N: 118897.149
E: 437411.487

Nail and seal in wooden post NW 42.62'
Nail and seal in end post West 35.05'

Statement of evidence relative to this corner location is on back of page.

I hereby certify that this document and the data contained herein was prepared by me or under my direct supervision.

[Signature] 3/5/09
SIGNATURE DATE

Registration No. 43844

Land Surveyor, Professional Engineer
 County Surveyor, County Engineer

OFFICE OF THE COUNTY RECORDER
County of _____

I hereby certify that this document was filed in the Co. Recorders office at _____ .M on the _____ day of _____ A.D. 20____

County Recorder [Signature]
By _____, Deputy

DOCUMENT NO. JUL 10 2009

Statement of Evidence

In 1866, J. W. Bishop did the original subdivision of the township.

On June 19, 1913, a stone was set at the corner.

On October 21, 2008, Bueltel-Moseng Land Surveying dug with a backhoe and found nothing. We set a 1" iron pipe with seal #43844 in the center of the road and in line with the fences to the east and west.